

INFORMATION ON THE IDENTIFICATION AND DESIGNATION OF PARTICULARLY SENSITIVE SEA AREAS IN THE STRAITS OF MALACCA AND SINGAPORE

Protection of Pulau Kukup (Kukup Island) and Tanjung Piai (Cape Piai)



8th Co-operation Forum (CF): Singapore, 5-6 October 2015

Outline

- Purpose
- Introduction / Significance of the proposed areas
- International shipping in the vicinity
- The ongoing IMO/Norad Cooperation Programme
- Recommendation

Purpose

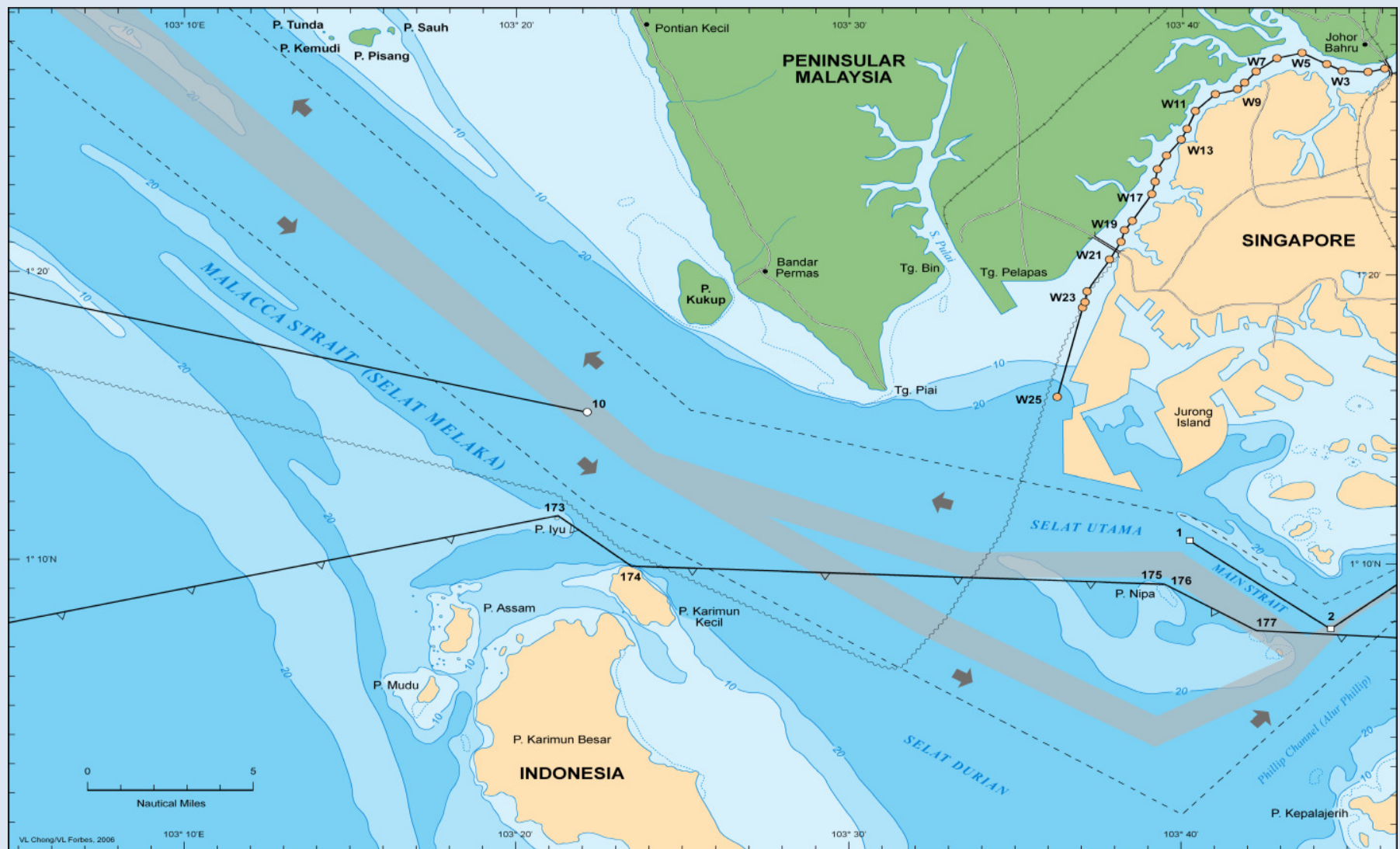
To inform of Malaysia's initiative under the framework cooperation agreement between IMO and the Norwegian Agency for Development Cooperation (Norad) on the identification and designation of Particularly Sensitive Sea Areas (PSSAs) in the Straits of Malacca and Singapore (SOMS).

- The identified areas include Pulau Kukup (Kukup Island) and Tanjung Piai (Cape Piai) National Parks at the southern tip of Peninsular Malaysia.
- The proposal was presented at the Marine Environment Protection Committee (MEPC) 68th Session at the International Maritime Organisation (IMO) in March 2015. A status update was also presented at the recent ASEAN Maritime Transport Working Group (MTWG) 30th Session Meeting in Cambodia, in September 2015.
- More detailed work is currently being undertaken as part of the framework cooperation agreement between IMO and the Norwegian Agency for Development Cooperation (Norad) for the prevention of pollution from ships through the adoption of PSSAs within the East Asian region.

Introduction and elaboration on significance of the proposed areas

- Pulau Kukup - Tanjung Piai (PK – TP) are coastal protected areas in the Malaysian state of Johore and are located at the southern tip of Peninsular Malaysia.
- Both areas are legally gazetted as National Parks under the Johore State Park Corporation Enactment, 1989 and as wetlands of international importance under the RAMSAR Convention 1971.
- The primary ecosystems present in both areas are mangroves and intertidal mudflats which support significant fisheries, aquaculture, and tourism sectors.

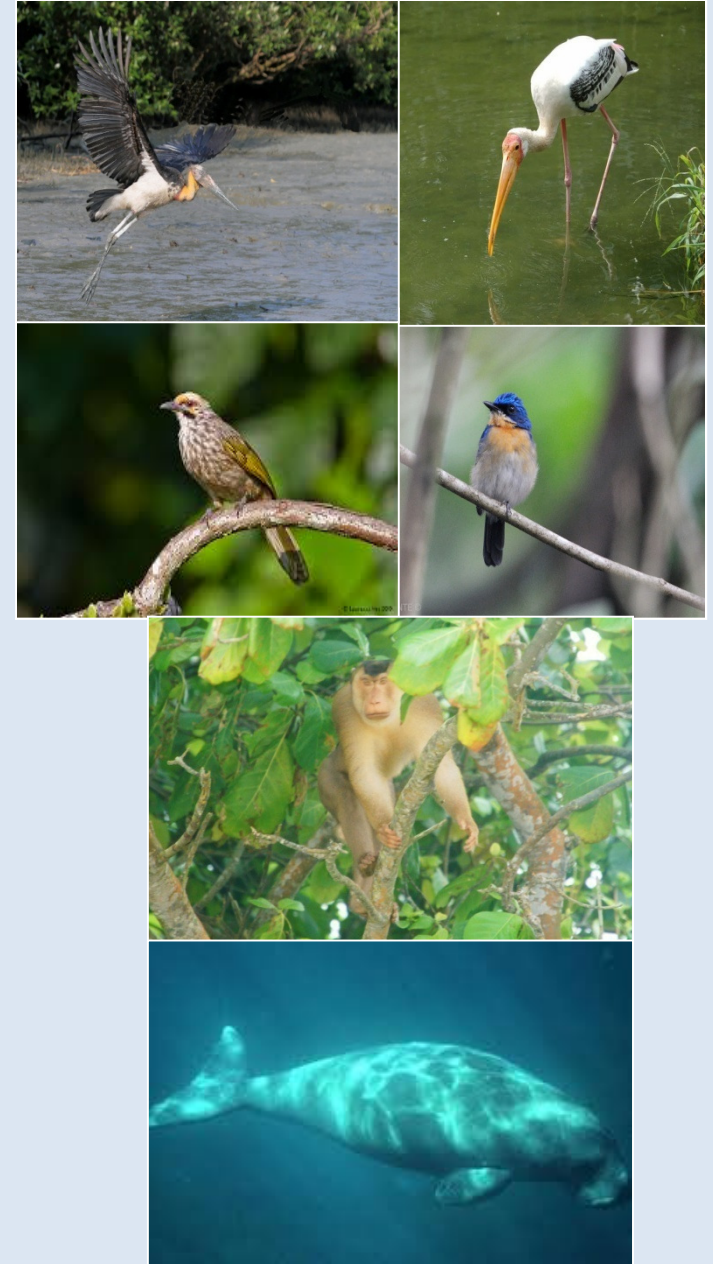




Location map of Pulau Kukup and Tanjung Piai

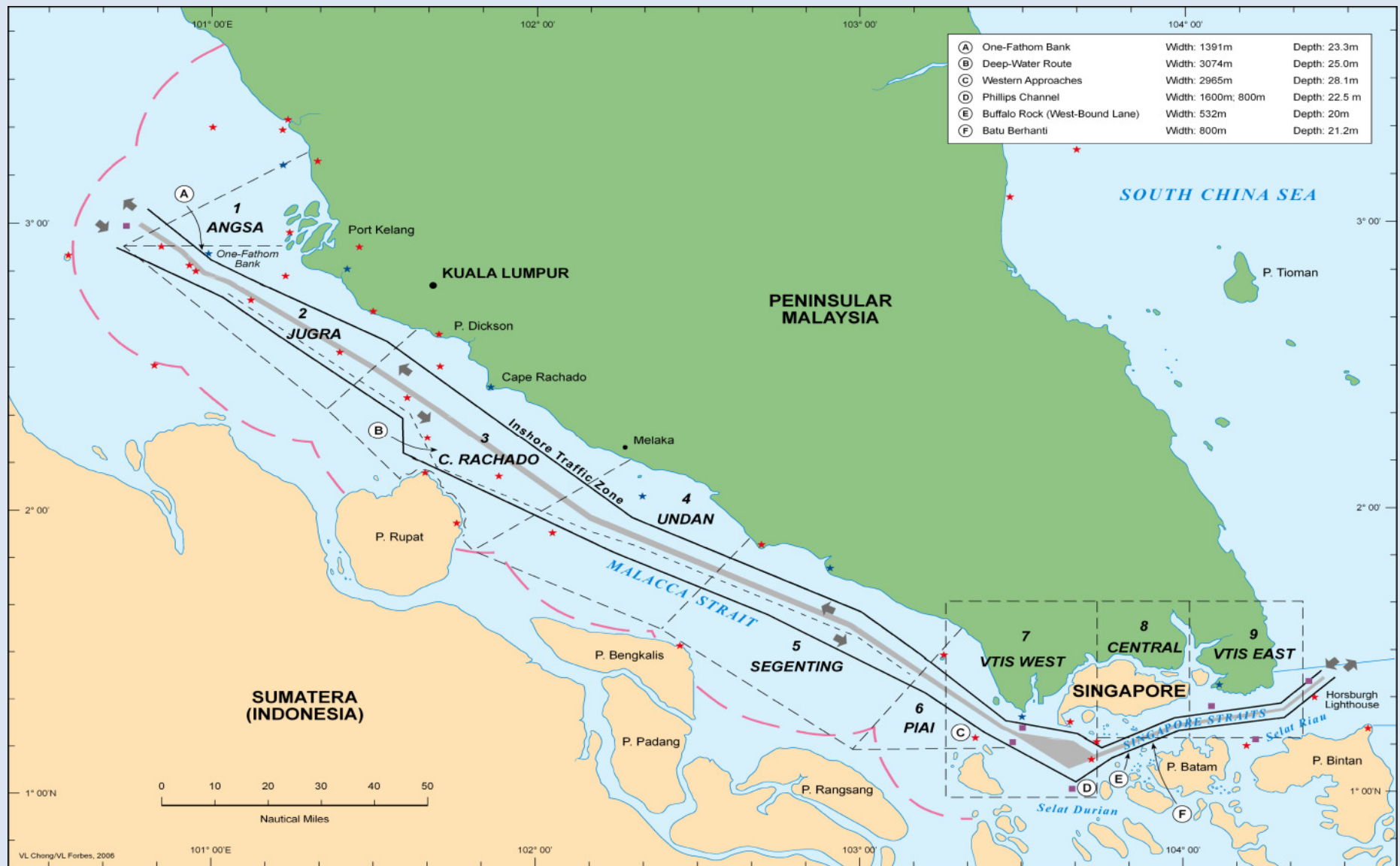
Source: Forbes, V.L and Basiron, M.N (2008)

- These areas are also home to vulnerable and endangered bird species as well as for migratory species of birds and endangered mammals.
- PK – TP are however subjected to heavy international shipping pressures as they are located in the narrow stretch of the SOM. For instance, the seaward mangrove area in Tanjung Piai is experiencing die-back and erosion possibly as a result of wave action from shipping activities near the area.
- The protection of the PK-TP area is crucial towards the protection of this continuum of important coastal ecosystems and the economic activities they support.



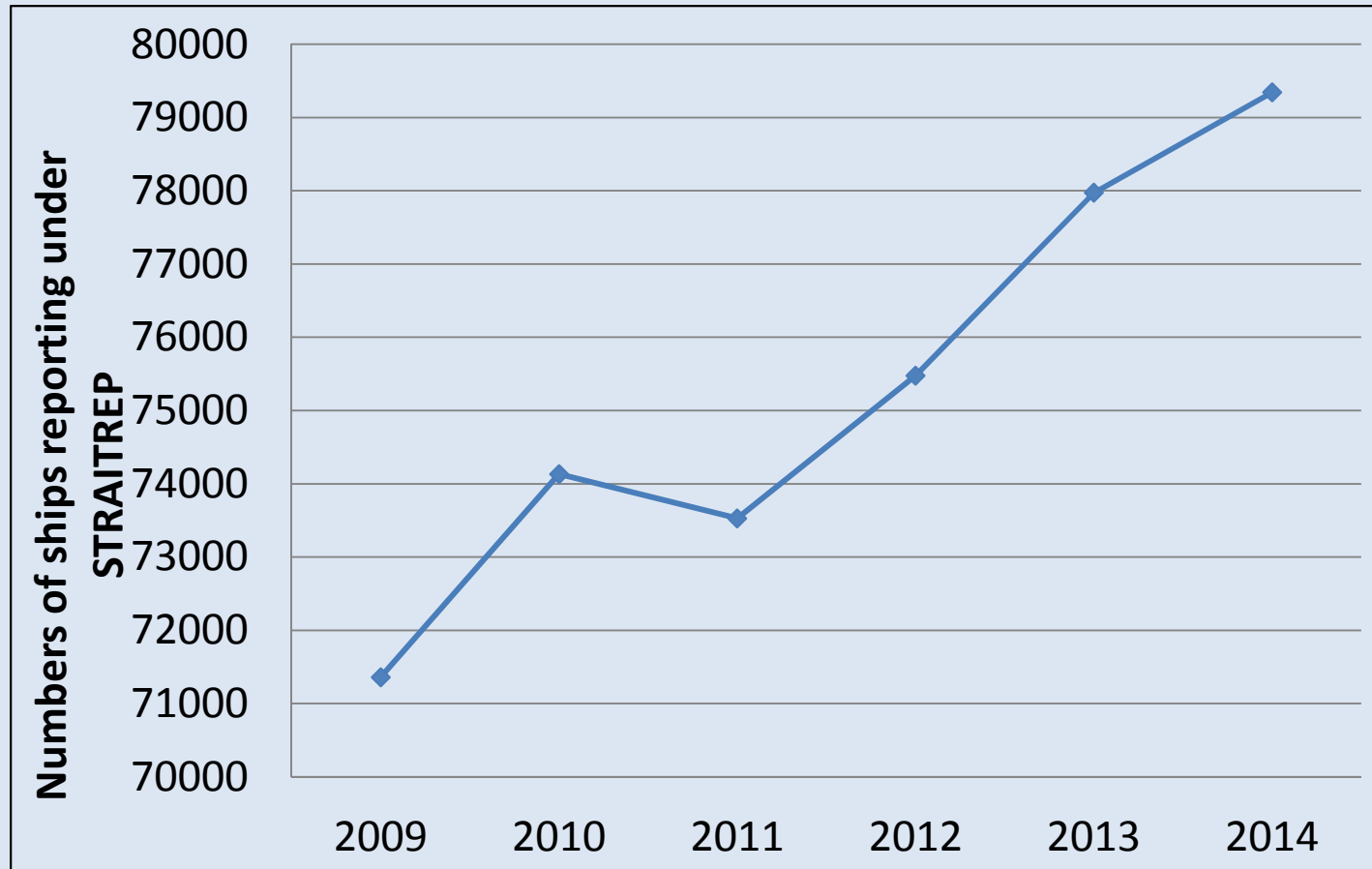
International shipping in the vicinity

- PK-TP is located within the vicinity of the SOMS Traffic Separation Scheme (VTIS) and Deepwater Route. This sector is one of the narrowest in SOMS and is also the entry point to the Port of Tanjung Pelepas and the Straits of Singapore.
- Besides the increasing number of eastbound vessels; these areas are also risked from illegal discharge of oily waste, sewage and garbage from laid-up vessels and vessels waiting and being illegally anchored within or near the PK-TP area.
- Additionally, there are emerging threats from the proposed development of the Tanjung Piai Integrated Petroleum and Petrochemical Hub which could potentially increase vessel traffic in the area.



Traffic Separation Scheme, Deepwater Route and Inshore Traffic Zone in the Straits of Malacca and Singapore

Source: Forbes, V.L and Basiron, M.N (2008)



Numbers of ships reporting under STRAITREP (2009 – 2014)

Source: Marine Department Malaysia (2015)

IMO/Norad Co-operation Programme

A detailed study on designating PK-TP coastal protected areas as PSSAs is being undertaken as part of the IMO/Norad Cooperation Programme.

Recommendation

The Forum is invited to take note of Malaysia's initiative on the identification and designation of Particularly Sensitive Sea Areas (PSSAs) in the SOMS.